

# Prepare it!

**1 2 3**  
WORKFLOW

## SOFTWARE FOR PRINT TO CUT

Prepare-it makes PRINT and CUT preparations easy and yet more efficient than ever before. With very user-friendly and simple tools you can prepare your print and digital cut files in seconds – Prepare-it automatically generates PDF print file and corresponding AI cut file – no worry about RIP/print-er interface – just PRINT and CUT.

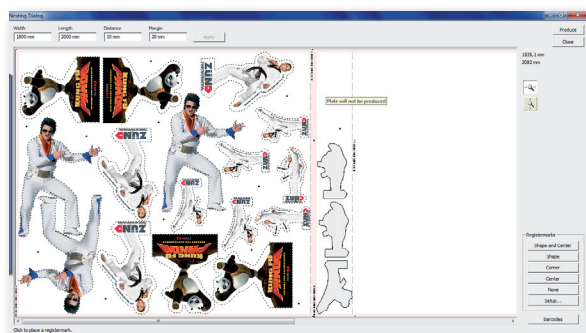
Prepare-it will guide you through necessary preparations for print and cut, allow for corrections, tiling etc. and save hours in prepress, print and finishing. Nesting based on actual cutting contours, tiling and automated file processing will increase productivity, save on substrates and maximize print capacity.

Benefit from connecting finishing, printing and design departments with powerful client/server technology and let prepare-it be your dedicated workflow preparation tool for all print to cut.



### REGISTER MARK AND BARCODE

- > Automatic registration mark insertion in Print and Cut files
- > Manual placement of registration marks, inverted marks, colored marks, support for white printing
- > Save preferred register mark strategy into each media – corner marks, shape marks and center marks
- > Automatic barcode insertion in Print file – generates a unique job ID code with each print file for easy file retrieval at the cutter



### NESTING

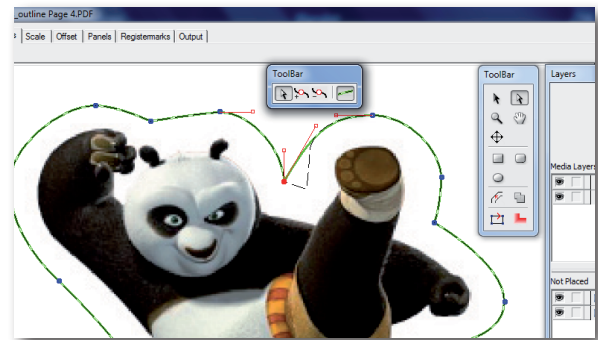
- > True shape nesting based on actual cutting contours
- > Nest different jobs on same media and conserve substrate
- > Maximize print capacity by nesting jobs to larger sheets for full width printing
- > Reduce ink consumption with auto cropping feature
- > Nest single jobs and tiled graphics

### AUTO FOLDERS

- > Automate workflow with intelligent Auto Folders
- > Specify file preparation actions on folder level and SAVE on expensive prepress time
- > Customize workflow to look for spot color, layer name, trim box, page size, art box etc
- > Auto Folders automates monotone file preparations and guarantees high quality Print and Cut file output

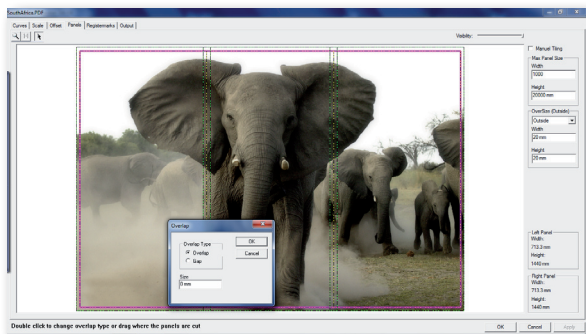
## CUT MEDIA MANAGEMENT

- > Build-in library with commonly used materials
- > All media include ready-to-use settings for generation of Print and Cut files
- > All media contain prepress parameters – such as 'placement strategy' for register marks, register mark color, nesting rotations etc.
- > All media includes optimized cut parameters – such as cutting tool, cutting speed, acceleration, router settings, recommended type of knife blade etc.
- > Possibility to edit, create, copy, rename media to customize own library.
- > Import, export and backup of media – select preferred media from a large updated on-line library
- > Show / hide media to only see relevant materials in use



## EDITING

- > Cut path editing for last minute corrections
- > Fix cutting contours without having to re-open jobs in complex and time-consuming design applications
- > Scales, offset, move and optimize cut path



## TILING

- > Auto tiling of jobs larger than media
- > Manual tiling – specify panel size, overlap, gap and bleed
- > Tiling of irregular shaped graphics
- > Creates perfect matching panels as individual print and cut files or nested together



## EYELETS

- > Automatic insertion of eyelets for banner and textile applications
- > Specify margins, no. of eyelets, distance between eyelets and select to print or make cut-outs
- > Specify overlaps for welding and sewing

## SUPPORTED FORMATS

- > All PDF formats are supported by use of Adobe's own PDF Library
- > Imports PDF, EPS, AI, TIFF, JPEG, JPG, BMP, GIF and PNG
- > Output AI cutfile format
- > Integrates with all vision systems including Zünd Cut Center

## CROP

- > Create simple cut paths such as rectangles, rectangle with rounded corners and circles
- > Auto cropping function in connection with use of Auto Folders
- > Crop images to select part of job and create cut path

Zünd Skandinavien ApS  
Knudsminde 4B  
DK-8300 Odder  
T +45 87 80 22 70  
F +45 87 80 22 71  
info@zund.dk  
www.zund.dk

**ZÜND**  
swiss cutting systems